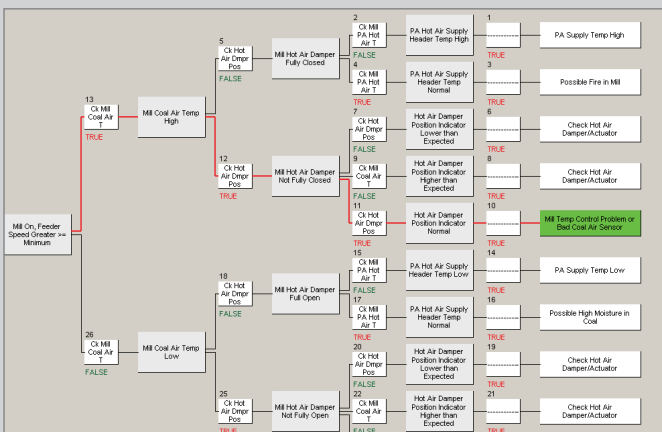




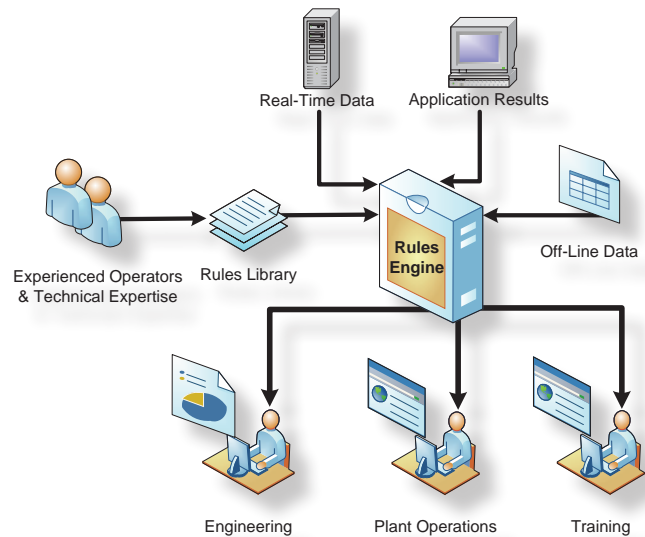
In support of our industry-leading, realtime, performance and condition monitoring products, Scientech has developed an automated condition assessment application that utilizes pre-configured and/or user developed rules that provides insight as to what the myriad of plant and process monitoring results indicate. This automated assessment is performed when an exception condition is identified in the real-time monitoring applications. The rules and calculations rely on actual monitored signals as related to the specific equipment component or system being assessed. Rules Engine integrates information from analytical applications where data is provided as input to the monitoring system.

Combining Scientech's real-time monitoring applications (PdP, CMAX, and PMAX) with periodic PdM monitoring systems, a very thorough condition assessment can be obtained by providing clear text messages and detailed drill down insight. The Rules Engine application increases the value of any and all of Scientech's advanced, realtime monitoring products.



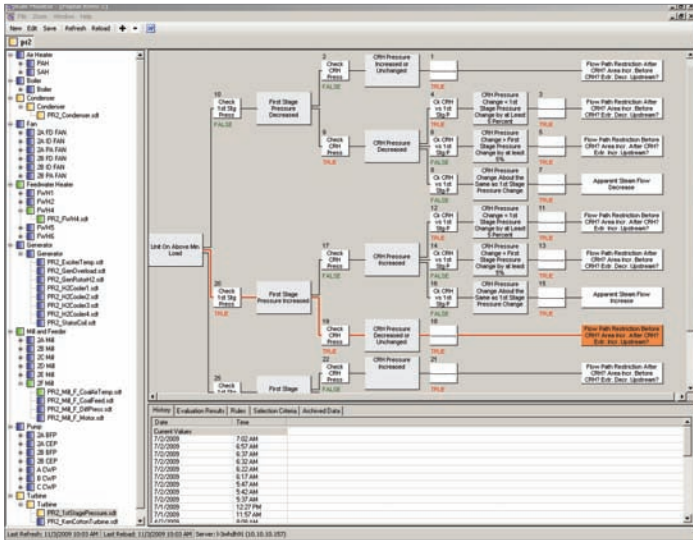
Rules Engine turns data into knowledge

by providing clear text messages of monitoring results information. This can aid organizations where in-house, technical expertise is lost or needs supplementing. Rules Engine provides a means for capturing and applying experienced operational expertise to a real-time equipment monitoring environment. It can guide operators to the root cause of reliability issues and the source of efficiency degradations. Rules Engine can also be used as a training application to consistently evaluate plant conditions and understand problem situations.



Features of Scientech's Rules Engine application include:

- Rule Editor and Rule Monitor modules included
- Rules configurable for each type of and specific machine component
- Embedded tools for end-user to create and modify rules, edit fault calculations, and adjust rule parameters per available data
- Ability to drill down into rule processing history, rule evaluation results, rule calculation information, and archived rule results review
- Rules can incorporate all integrated information - real-time, periodic, off-line
- Pre-configured rules for various fault condition assessments (Component Rules Library)
- Adaptable to all types of plant components, rotating, non-rotating, electrical, ...

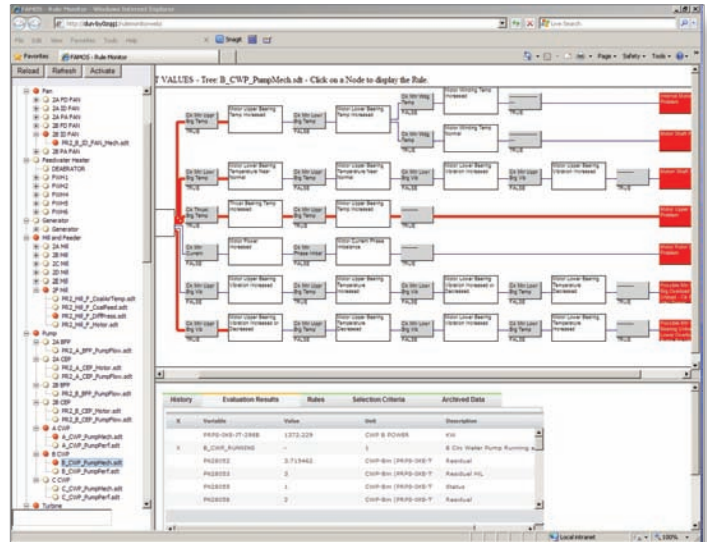


Rules monitor display showing unit status tree of all monitored equipment for a particular unit.

The Rules Engine product has a Component Rule Library of pre-configured generic type rules that can be easily applied to new monitoring projects. This library presently has over eighty rules for various types of power plant equipment. Starting with a generic rule, mapping the generic rule to a specific piece of equipment, and then mapping the associated application results and signal data to that rule results in the generic rule becoming unique to that specific monitored component. More generic rules will be added as time proceeds.

Rules Engine runs in its native server-client environment as well as in a web format to best facilitate a thin client deployment

Rules Engine is one element of Scientech's Fleet Asset Management and Optimization Solutions (FAMOS) suite of products which are built on more than 30 years of power industry experience. Combining domain expertise with advanced technology, the suite is an integrated solution tool set for equipment monitoring, detecting problems, analyzing anomalies, improving plant performance, as well as efficiently accessing vast amounts of plant data which are the foundation of your operation. These integrated applications provide an in-depth approach to plant performance monitoring and optimization.



Rules Monitor Web view

Scientech's vision of a truly effective and optimized equipment condition-based maintenance initiative relies on the following:

- Utilization of multiple monitoring technologies
- True integration of all applied technologies
- Real-time information communications
- Well defined processes
- Reliable knowledge for efficient and productive actions

The Scientech Rules Engine product, when combined with the other FAMOS condition monitoring tools, helps fulfill these objectives very effectively.

For additional information contact Scientech at 208-524-9200 or visit <http://famos.scientech.us>.

