

A Graphical Interface with Powerful Application Tools make PMA the Monitoring Software of Choice.

The PMA plant monitoring and optimization system has been widely adopted, with more than 300 commercial and industrial installations around the world. Both plant operators and engineers benefit from the critical information and readily accessible tools available through the software. Key benefits derived from employing the technology include:

- **Comprehensive assessment** of plant performance – PMA detects abnormalities at the system, component and instrument level
- **A flexible application**, designed to be used with conventional fossil, Combine Cycle, Simple Cycle, Nuclear and Geothermal systems. Plus configurations can be *customized to fit your budget* and plant needs
- **Money-saving advantages** – maintenance efforts and downtime are more readily managed through PMA
- **Easy, reliable detection** of instrument fault and calibration errors through Advanced Pattern Recognition (APR)
- **Integrates** with existing software – PMA is easily networked for information sharing throughout the plant; links to Excel and to PEPSE models for conducting “what-if” analysis
- **Added value** from your investment – a complete 64,000 point database comes with the standard system, all modules are available through one license; comprehensive, graphical output offers ease in monitoring data, and *unlimited report capability*
- **Ongoing technical assistance and training** – includes a complete range of support, maintenance, troubleshooting and regular software updates which *increase the return on your investment* overtime



Plant operators and engineers have successfully monitored their facilities for more than 25 years, using the array of tools and numerous reports available through the popular PMA system:

Historian

This valuable feature allows users to design and implement their own *custom data historian system*. Processes configurable by the user include: duration, frequency, event-driven characteristics and file type for a comprehensive assessment of plant operation.

Trending

Constructing or modifying a detailed trend takes only a few moments. The standard trending tools in PMA provide multiple variable trends against time, or a plant parameter per trend window, to *monitor online data, calculated values or historical information*.

The program will bring up custom trends to show *current real-time data, archival data or a combination of both*. Each variable is presented in a unique color for *easy identification* and each trend or display can be printed on a color printer or plotter locally or on user-selected network printers.

Reports and Diagnostics

The PMA logging system allows you to construct *hour, shift, day, and week log reports*. Logs can be scheduled for printing at a specific time, periodically or by event. The following information can be readily shared through easy report compilations:

- Customized information regarding specific **plant shifts**
- **Statistical data** showing actual and target value
- **Suspect reports** that identify instrument readings that fail to meet input validation criteria
- **Diagnostic reports** that provide a comprehensive summary of system instruments and help flag when remedial action is advisable

Extensive Calculation Ability

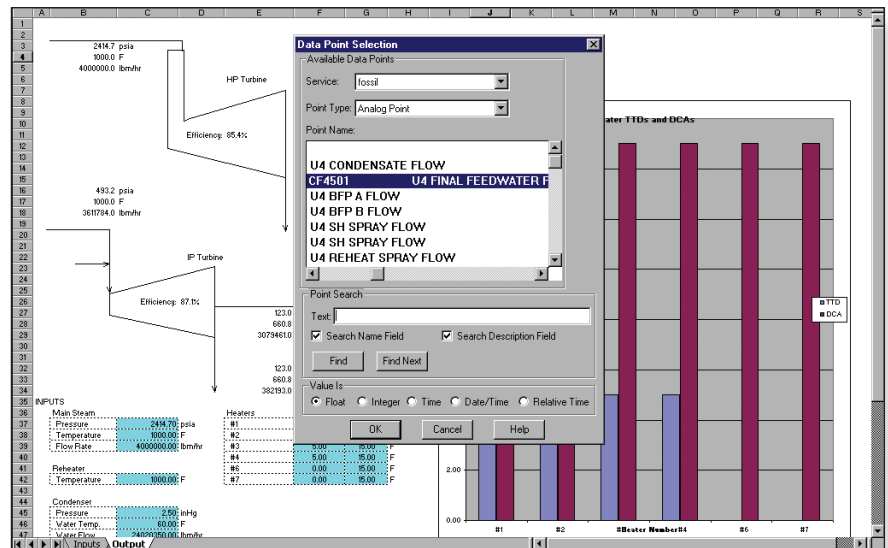
The following is just a sample of the many calculations available in a PMAX system:

- Air Heater Performance
- Boiler Efficiency (I/O and Heat Loss)
- Boiler Soot Blowing Advisor
- Condenser Performance
- Feed Water Heater Performance
- Generator Performance
- Heat Exchangers Performance
- Heat Recovery Steam Generators
- Lost Power Advisor
- Moisture Separator Reheater Performance
- Operator and Engineer Controllable Losses
- Pump Performance
- Steam & Gas Turbine Performance

Valuable Features

- 64,000 Point Database
- Display Builder
- Fleet Wide Operations Features
- Full Trend Package
- Log and Report Generator
- OPC® and ODBC® Connectivity
- Plant Historian
- Remote Access Tools (works with firewalls)
- System Health Log
- 31 Level Security System
- Support Programs (Steam Table add-ins and many more)

The standard trending tools in PMAX provide multiple variable trends against time or a plant parameter per trend window to monitor online data, calculated values or historical information.



These are just a few of the reports that can be generated using the PMAX logging system: Shift Monitor, Statistical, Suspect and Diagnostic Summary reports.



The Scientech Approach Optimizes Your Performance

Scientech's PMAX product, in conjunction with the other FAMOS™ condition monitoring tools, brings efficiency, superior protection and a total system for effectively monitoring your operation.

For additional information contact Scientech at 208 524-9200 or visit <http://famos.scientech.us>



Scientech, a business unit of Curtiss-Wright Flow Control company
© 2008 Scientech. PMAX is a registered trademark and FAMOS is a trademark of Scientech.
All other trademarks indicated are registered trademarks of their respective corporations.